



Beam Smoke Detector BSD 535

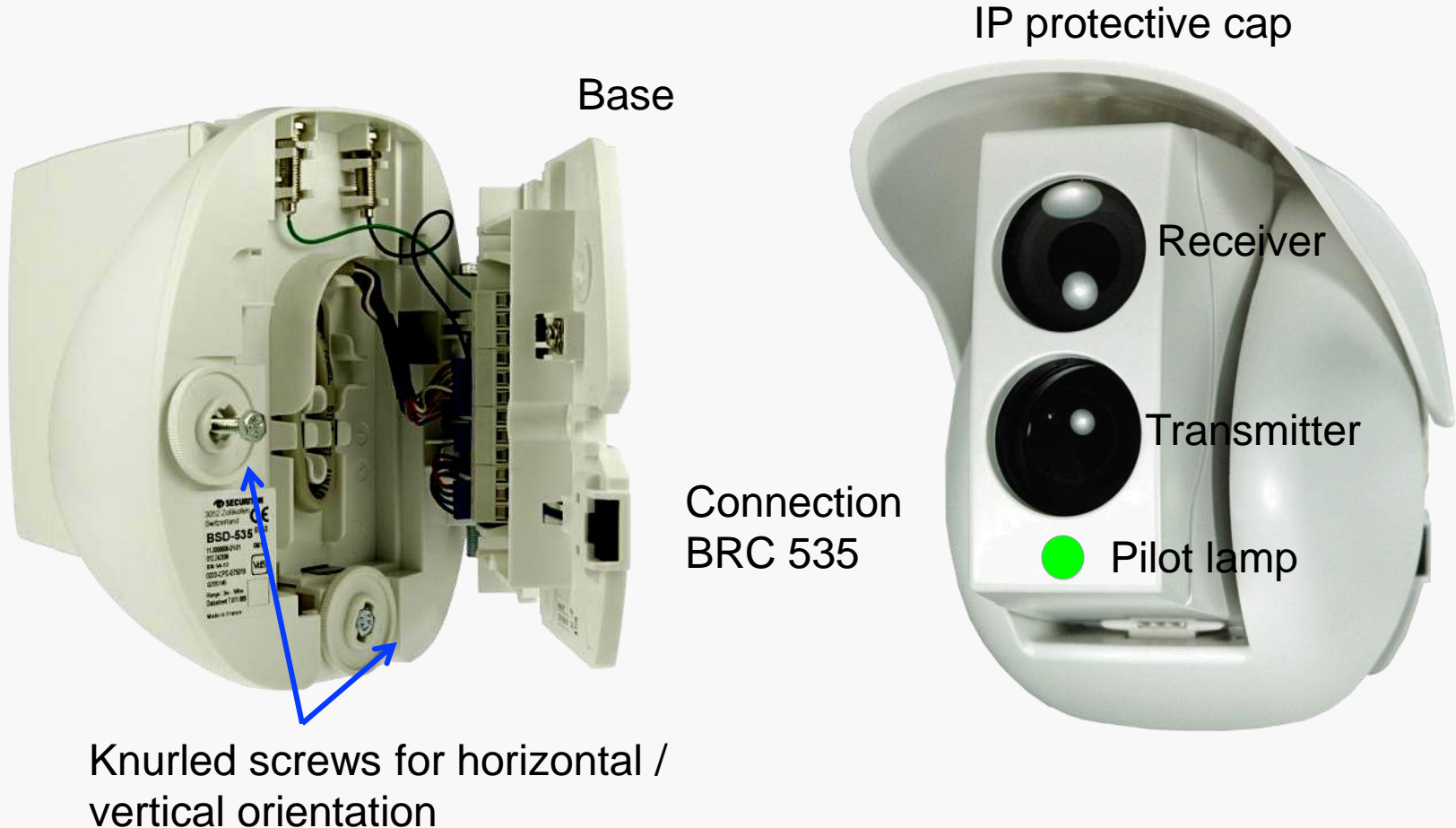
Sales presentation

Contents

- **Stylish design and compact dimensions**
- **Detector in white – RAL 9016**
- **Function between 3m and 100m**
- **Replaces all Eco variants**
- **For simple adjustment and to commission**
- **For simpler applications**
- **Event memory**
- **IP 31 protecting rating (optical unit IP 51)**
- **12 – 30VDC operating voltage**
- **Transmission to FACP**

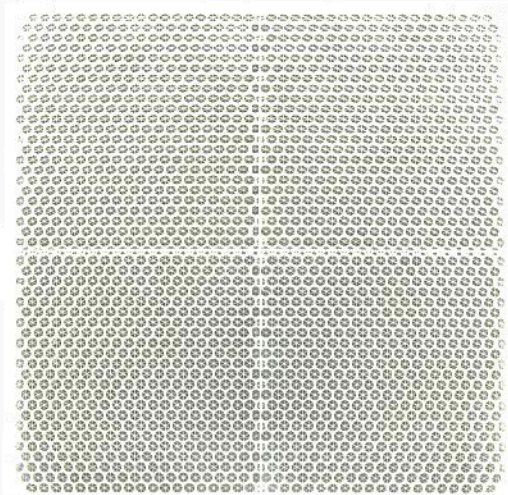
System Design / Components

- **Transmitter / receiver unit**



System Design / Components

BRE 535-1 (also part of the scope of delivery)
1 reflector extension



BRE 535-3
3 reflector extensions
Up to 16 individual reflectors combinable (depending on distance)



Accessories - BRC 535 Remote Control Unit



- Powers the BSD 535
- Alternative to the BSD keys
- Installation guide
- Sets the parameters of the BSD
- Maintenance (event memory)
- Connection via BRU 535 or direct
- Operating Instructions available



Accessories - BRU 535 Reset Unit



- Decommissions / commissions the BSD 535
- Resets the BSD 535
- Connects the BRC 535 in an easily accessible place
- Data sheet available

Accessories - BRU 535 Lattice Shield



- Mounting on reflector
- Protects against disruptive insolation (e.g. sunlight)
- 1 lattice shield with incidence angle $> 40^\circ$
- 2 lattice shields with incidence angle $> 20^\circ$

Accessories - Light Shield



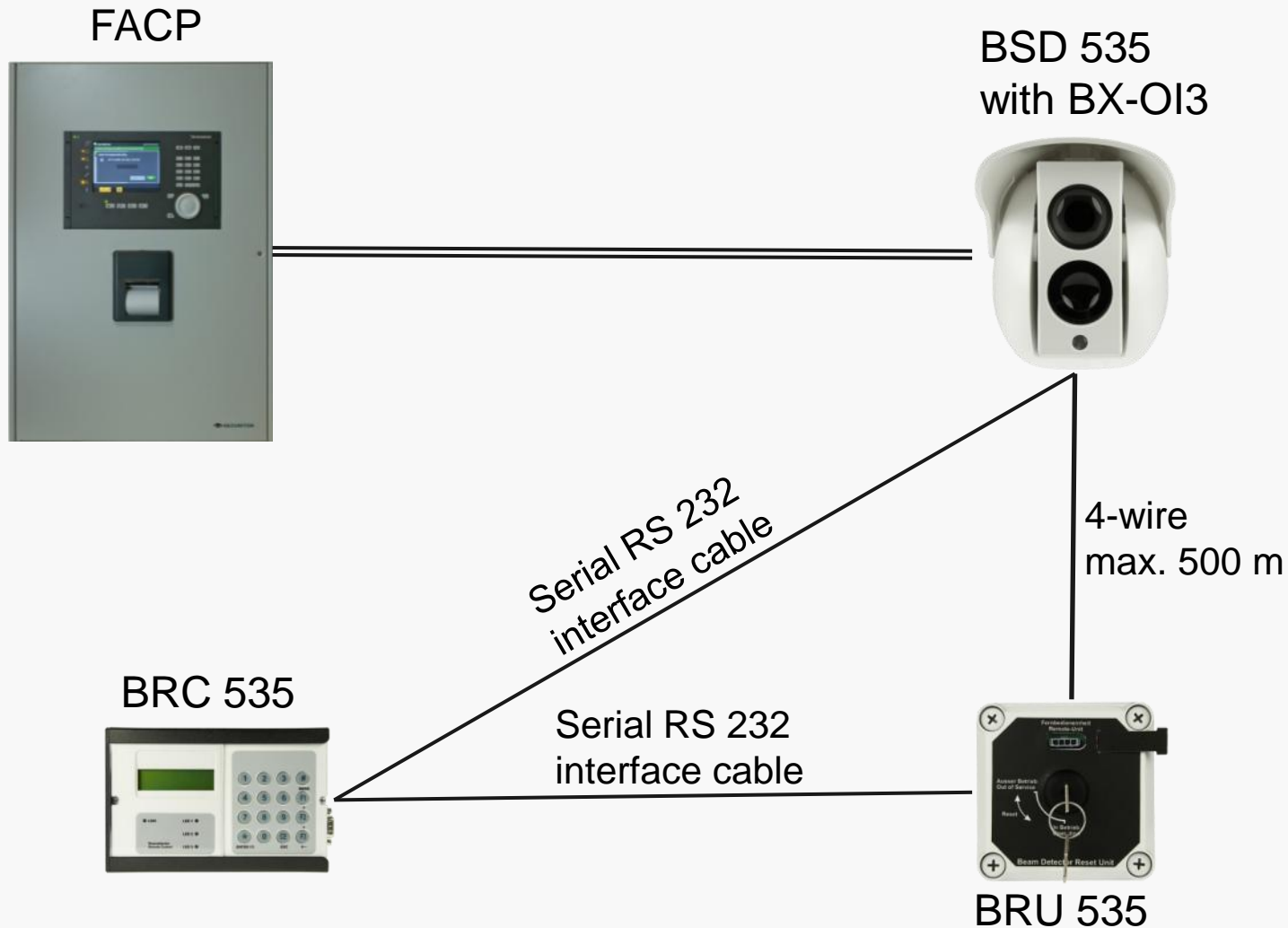
- Included in the scope of delivery
- Mounting on receiver lens
- For installations with a high light intensity (dazzling effects)

Accessories - BAB 535 Articulated Bracket

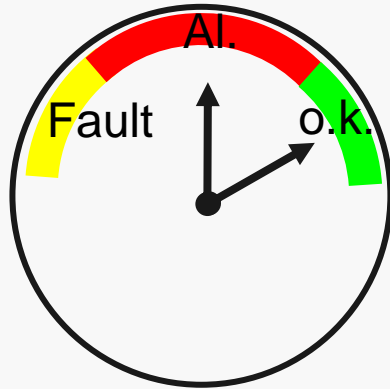


- For flexible mounting of the detector or reflector

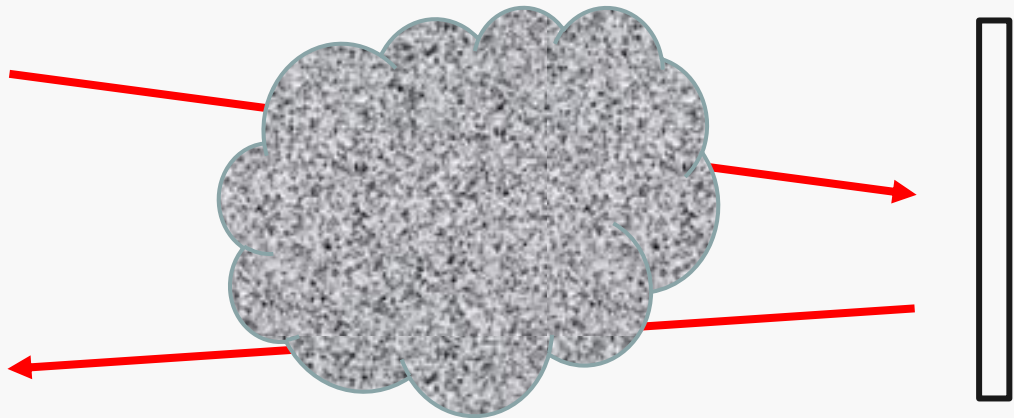
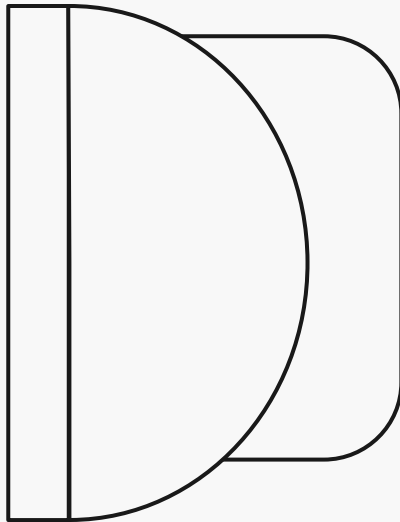
Connection



Functionality



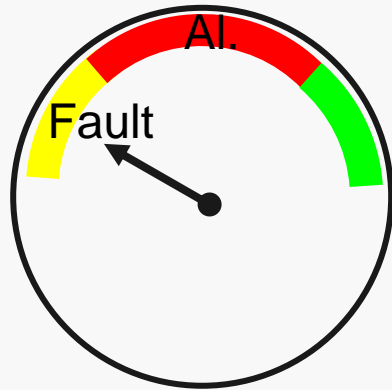
- No attenuation → System OK
- Attenuation e.g. Smoke → System Alarm



3 sensitivity levels

- N6 = minimum
- N5 = average
- N4 = maximum

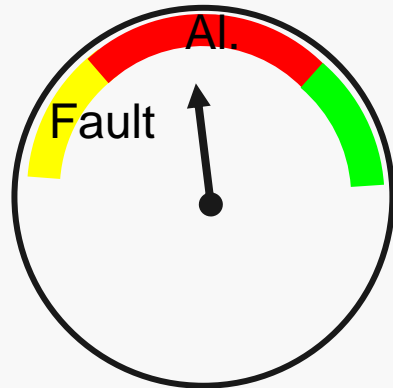
Functionality



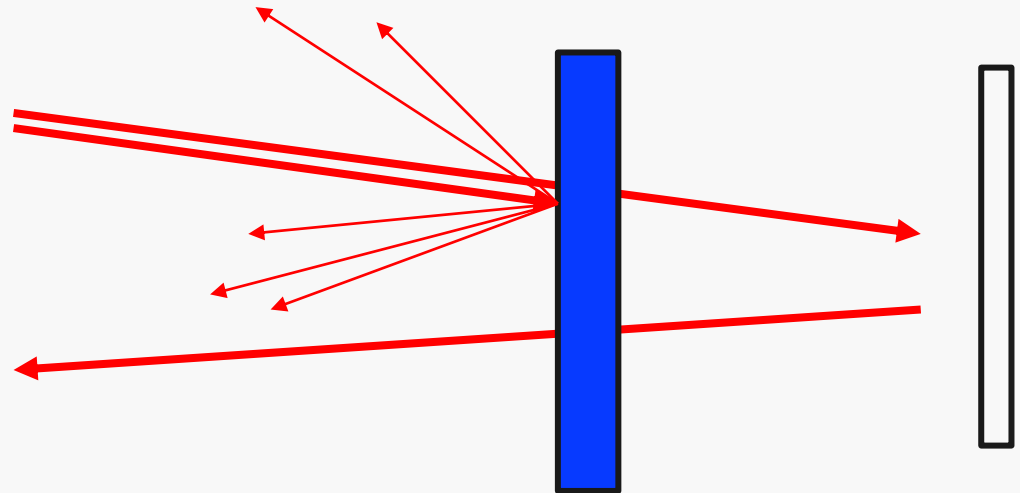
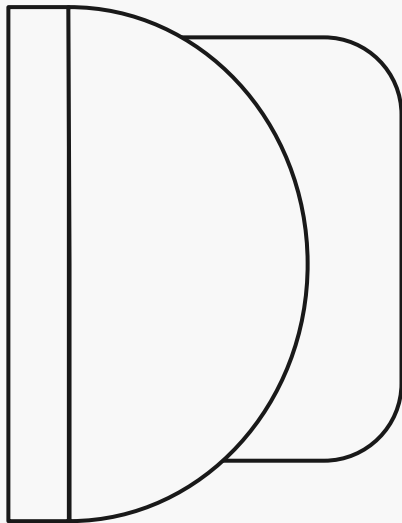
- Receiver receives no reflecting signal → Fault



Functionality



- Reflecting objects can lead to fault alarms, because the return signal behaves like an attenuation.



Advantages

- **Very simple to install and to commission thanks to**

- BRC 535 remote control



- Aligned using knurled screws

- **Maintenance access via BRU 535**



- **At-a-glance product range (only 1 version for 3-100 m distance)**



- **Event memory**